

MICRONOR

automation components

MR330 Series ZapFREE® Fiber Optic Absolute Encoder System And ZapView® Configuration Software

Installation Guide

Doc No: 98-0330-16

Rev B: 10-12-2015



MICRONOR INC.
900 Calle Plano, Suite K
Camarillo, CA 93012 USA
PH +1-805-389-6600
FX +1-805-389-6605
sales@micronor.com
www.micronor.com

For Support in Europe:
MICRONOR AG.
Pumpwerkstrasse 32
CH-8105 Regensdorf
Switzerland
PH +41-44-843-4020
FX +41-44-843-4039
sales@micronor.ch
www.micronor.com

Notice of Proprietary Rights

The design concepts and engineering details embodied in this manual, which are the property of MICRONOR INC., are to be maintained in strict confidence; no element or detail of this manual is to be spuriously used, nor disclosed, without the express written permission of MICRONOR INC. All rights are reserved. No part of this publication may be reproduced, stored in a retrieval system, or transmitted in any form or by any means, electronic, mechanical, photocopying, recording, or otherwise, without prior written permission from MICRONOR INC.

© COPYRIGHT 2011-2015, MICRONOR INC.
NEWBURY PARK, CALIFORNIA
UNITED STATES OF AMERICA

MR330 - ZapView® Setup Software Installation Guide

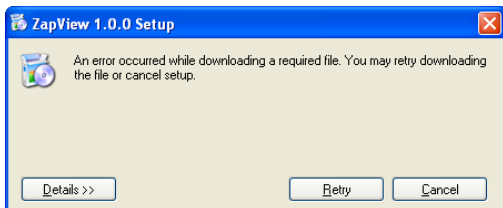
ZapView®: PC Software for configuring the Parameters of the Micronor MR330 Fiber Optic Position Sensor and for familiarization with the many features of the unit.

System Requirement: The ZapView® Software requires the .NET FRAMEWORK 4.0 Client to be installed on the PC. If your system does not have the .NET FRAMEWORK 4.0 Client installed follow the instructions in Step 1 To install the .NET FRAMEWORK 4.0 Client.

Installation of ZapView® is simple. The Installer will install the necessary files on your PC, follow the steps:

Step 1 Insert the ZapView® CD into the CD drive. The program should start automatically if Autoplay is enabled on the PC. If the installation does not start automatically simply Run the Autoplay.exe program from the root directory of the ZapView® CD, then Select the Install ZapView® Software. A second option is to run the Setup.exe program from the root directory of the ZapView® CD.

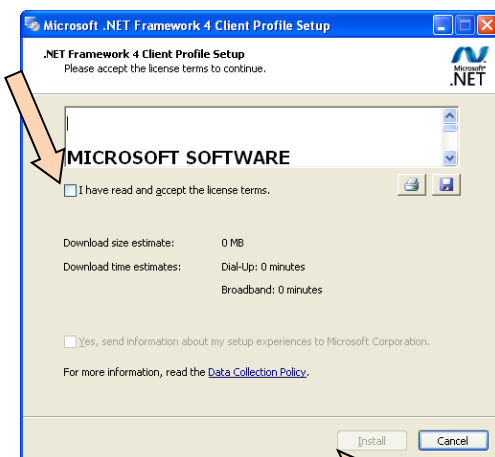
If you encounter the following error:



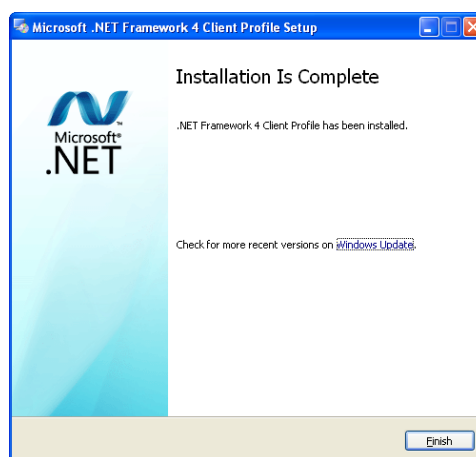
The problem may be that the required .NET FRAMEWORK 4.0 Client is not installed on the PC. Select Cancel and install the .NET FRAMEWORK 4.0 Client.

To install the .NET FRAMEWORK 4.0 Client on the PC, Run the file “dotNetFx40_Client_x86_x64.exe” found on the Root directory of the ZapView® CD.

When the .NET FRAMEWORK 4.0 Client installation begins, select I have read and except the license agreement:



Install the software



When finished the following message will be displayed.

With the .NET FRAMEWORK 4.0 Client installed the ZapView® Software can now be installed.

Run the Setup.exe program from the root directory of the ZapView® CD

Step 2 The Installer will guide you through the steps to install the ZapView® Software.

Step 3 Click on **Next>** to continue through the installation.

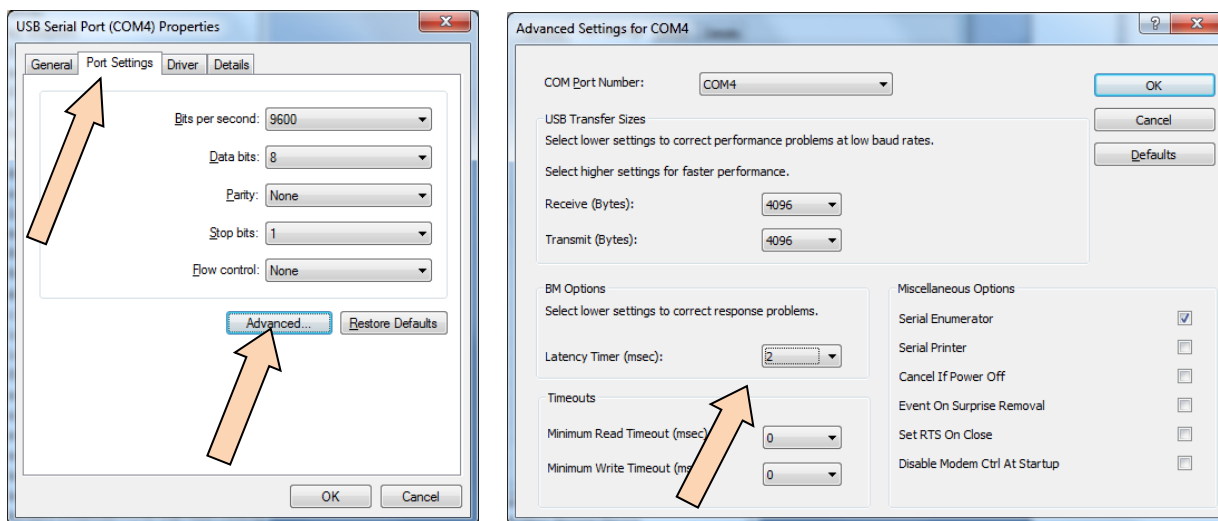
Step 4 You must Read and Agree with the End User License Agreement to use this Software.

Step 5 The Installer will load the USB driver for the FTDI interface chip on the PC enabling ZapView® to communicate with the MR330 Controller. More information on the USB driver can be viewed on the USB_Driver folder on the CD.

Step 6 When the Installation is Complete Simply **Close** the Installer.

Step 7 For better performance configure the COM port Latency to 2 mS . This is configured under Computer Management \ Device Manager \ Ports (COM & LPT) (**NOTE: the COM port needs to be connected and the MR330 Controller must be power up for the COM to be visible on the PC**)

Select the USB Serial Port (COMx) \ Port Settings. Then select Advanced...

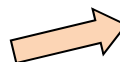


Set 2 for the Latency

Select OK when done.

ZapView® is now ready to use.

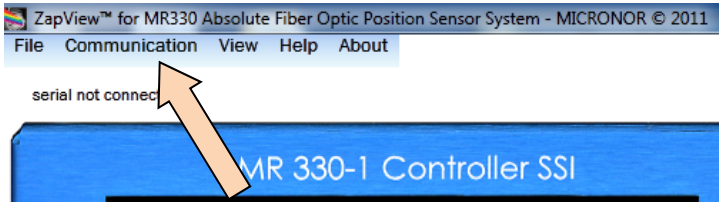
Start/Run ZapView® by selecting the Desk Top short cut



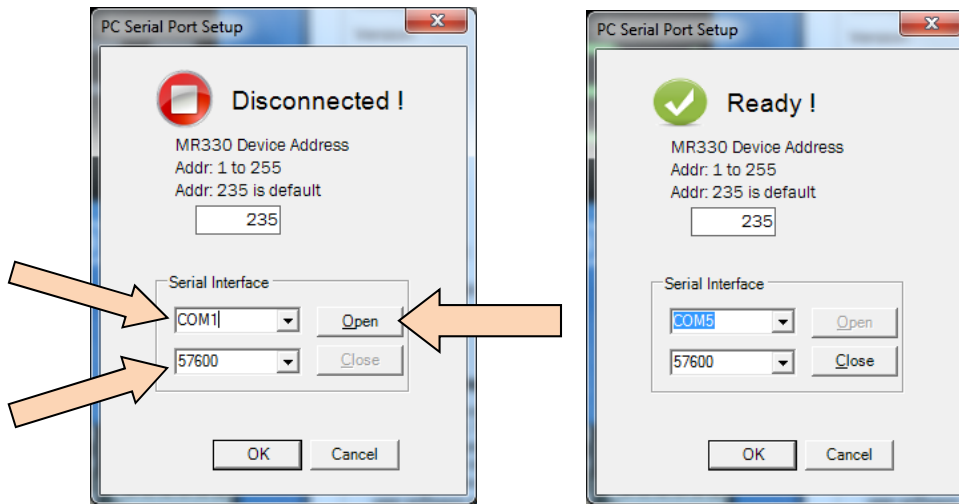
Or use the Start Menu.

ZapView® can communicate with the MR330 Controller via a standard PC Serial port, if the PC does not have a serial port, use a USB port. The USB cable must have a type B connector at the end that plugs into the MR330 Controller, or use the optional MR232-1 RS422/RS485 to RS232 Adapter Cable.

To start ZapView® communicating with the MR330 Controller click on Communication at the top of the ZapView® window.



The PC Serial Port Setup window will pop –up:

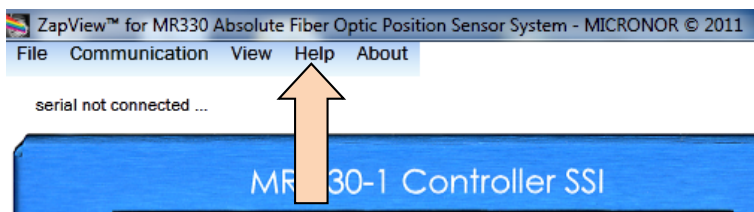


Select the Serial Interface COM port on the PC that is connecting to the MR330 Controller. The baud rate is 57600 (default). After selecting the Com Port and Baud rate, select **Open**.

The PC serial Port Setup will display Ready, when communication is established with the MR330 Controller.

Note: Only if the correct COM port and baud rate are selected communications will be successful.

Note: The ZapView® instruction manual can be displayed, select Help – ZapView®



ZapView® runs on: Windows 7, Vista, or XP with SP3 and with .net Framework 4.0 installed.