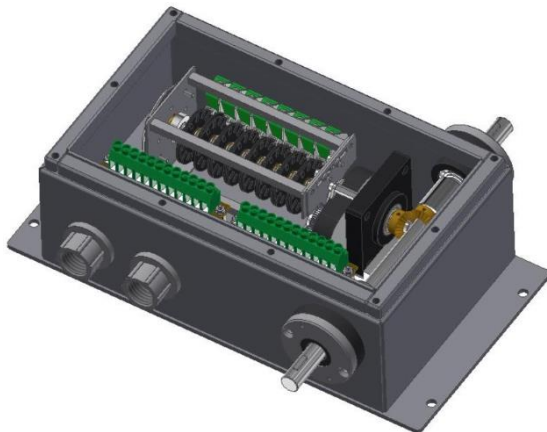


MR222 X SERIE



For Industrial, Crane's and Lockings

- ➡ Stainless steel housing
- ➡ Up to 8 channels
- ➡ Connected to wiring block
- ➡ 2x cable gland 1/2" NPT
- ➡ Protection class IP66
- ➡ Shaft with woodruff keys

Product description

Heavy duty geared limit switch in a stainless steel housing easy and variable to mount. 100% guard and interlocking drive concept up to the cam. Available in different ratios. The cover is provided with a sealing ring and fixable with 10 screws.

Application

This heavy duty geared limit switch could use to control every end switch application in cranes, mining, automotives and wind power

Technical specifications

Usable Gear Ratio	1:1 – 2500:1	(more on request)
Program channels	2-8	(more on request)
Internal Scaledisc	S 360 (0°...360°)	
Weight	ca. 4.260 Kg	
MTBF (IEC 60050)	ON/OFF 10 Mio cycles 200'000 hours	
Rotation speed	max. 1000 U/min	
Shaft load	radial 300N, axial 180N	
Protection	IP 66 EN 60 529 / Nema4	
Shock resistance	1000m/s ² , 3ms IEC 68-2-27	
Vibrations resistance	50 m/s ² , 10....1000 Hz IEC 68-2-6	
Humidity	85% rh	
Temperature range	-40 °C +85 °C	

MR222 X SERIE



Microswitch type

Order code	Picture	Description
0		S840 V20 changeover contact for cable shoe 6.3x0.9mm silver contact
		switching current 10A 250V AC / 6A 24V DC
		Maximum number of switches: Without MR265 = 8 / With MR265= 6

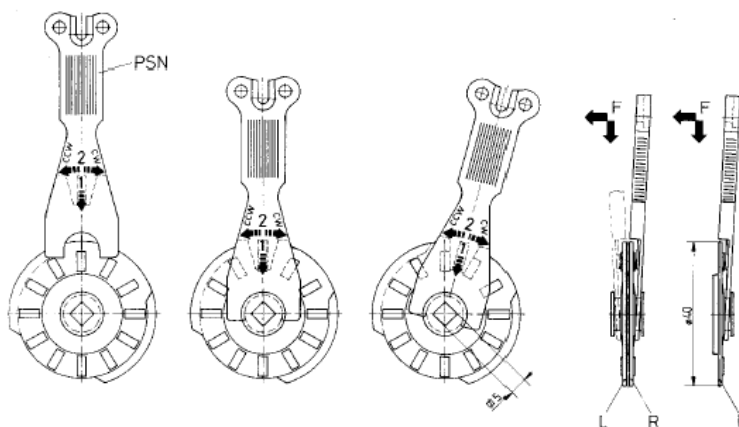
Mechanical life time	> 20 Mill.
Switching frequency	5 Hz
Contact chatter time	<4 ms
Actuating speed	>10 µm/s
Contact break	0,6 mm
Contact pressure	0,2 N

Cam types and adjustment

Order Code	Picture	Description
0		Single Cam adjustable with included PSN Key Available with 20° / 180° opening angle Material: Grilon T300
1		Double Cam adjustable with included PSN Key Free adjustable 6°-180° Material: Grilon T300

Adjusting guideline of NK cams

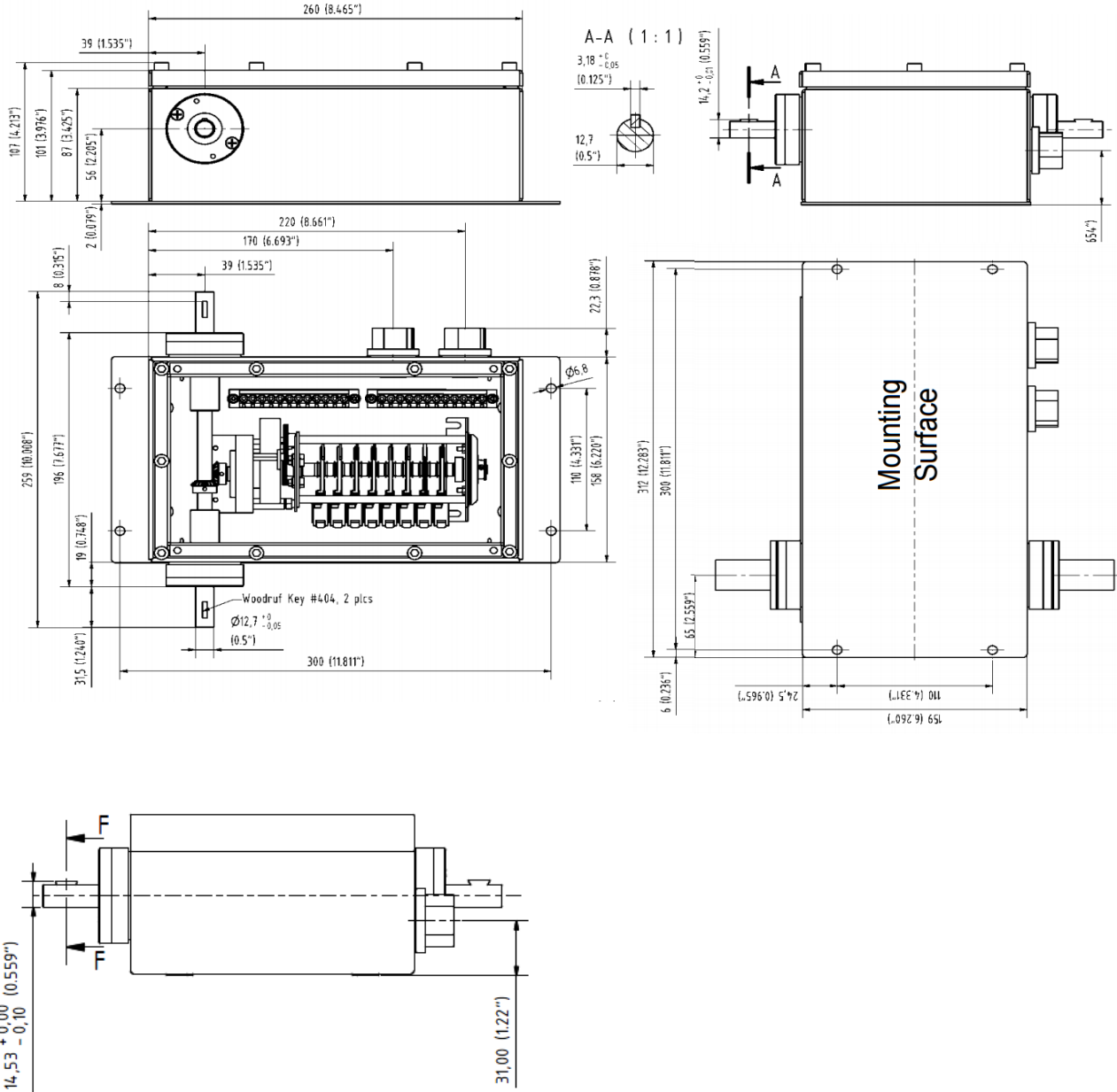
To adjust the NK cam use the PSN key with levelling the cam and turn



MR222 X SERIE



Dimension in mm



MR222 X SERIE



Electrical wiring

Standard wiring kit (included)

Screw terminal

24 x type MKDS 5/3-6.35 (max. 6 mm²)

Switch no.	Function	Terminal Block
1	COM	1
	NC	2
	NO	3
2	COM	4
	NC	5
	NO	6
3	COM	7
	NC	8
	NO	9
4	COM	10
	NC	11
	NO	12
5	COM	13
	NC	14
	NO	15
6	COM	16
	NC	17
	NO	18
7	COM	19
	NC	20
	NO	21
8	COM	22
	NC	23
	NO	24



MR222 X SERIE



Order code

MR 222X

929 x. x x. x x x

929 MR222X

RATIO

- 0 12,5 : 1
- 1 20 : 1
- 2 25 : 1
- 3 30 : 1
- 4 40 : 1
- 5 50 : 1
- 6 75 : 1
- 7 100 : 1
- 8 200 : 1
- 9 750 : 1

INTERFACE

- 0 none
- 1 MR265 Current interface 4-20mA – (max. 6 switches)

NUMBER OF SWITCHES

- 0 2 Switches
- 1 3 Switches
- 2 4 Switches
- 3 5 Switches
- 4 6 Switches
- 5 7 Switches
- 6 8 Switches

TYPE OF SWITCHES

- 0 S840 V20 changeover contact for cable shoe 6.3x0.9mm silver contact

CAM

- 0 Single Cam NK4101
- 1 Double Cam NK4201

CAM PROFILE

- 0 20° recess
- 3 180° recess



Do you have any Questions ? Phone: +41 (0)44 843 40 20 or Mail: sales@micronor.ch