

MR190 SERIES



For machining, control panel, laboratory equipment

- ➔ Different output signal
- ➔ RS232- or USB- interface
- ➔ Including knob
- ➔ 100 pulses per turn

Product description

The series MR190 is perfect to use in front of a machine or inside in a handheld unit. The compact and small size helps to design in all application around machining. The intergraded encoder creates different signals and send 100 pulses per round to your controller. With RS232 interface 8..30VDC supply voltage or over the USB interface directly. MVSCOM Software.

Application

This manual pulser is also placed in front of all CNC machine, wood handling machine line, baggage handling machine line, paper handling machine line, telescope movement, laboratory equipment.

Technical Data

| | |
|-----------------------------------|------------------------------------|
| Power consumption | max. 40mA |
| Sampling frequency | max. >5 kHz |
| Supply voltage | 12VDC |
| Torque | <0.2Ncm |
| Detent torque (click point) | 8Ncm |
| Life time | 20x10 ⁶ cycle (200 rpm) |
| Operating and storage temperature | -10°C + 60°C |
| Air humidity | 85% RH |
| Vibration | 10...55 Hz 1.5mm 2hr |
| Shock | 50G (11ms) X, Y, Z |
| Weight | ca. 300g |

MR190 SERIES



Quick start guide

The handwheel can be either via the 9-pin D-sub socket or be operated via the 5-pin mini-USB socket.

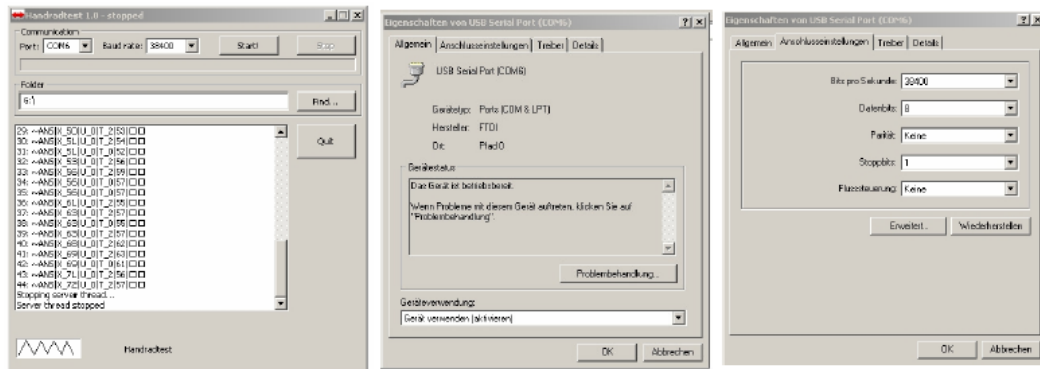
The connection to the MR190 evaluation electronics via a 8-pin connector. Via this plug MR190 from value electronics is supplied with 5V.

Connect to PC

The programm mvscm.exe is attached to the operation of the hand wheel on the PC (Windows XP).

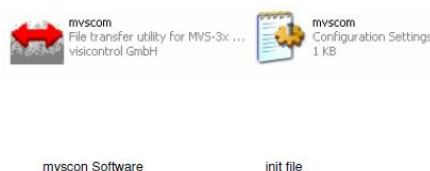
This program requests the counter of the handwheel in the 70ms clock. The response log of the handwheel is displayed in a window. With the button start, starts the communication. Each time, the counter value in the handwheel is set to 0. With the button stop, the communication stops. The baud rate must be set to 38400 baud. From the baud menu adjusts the communication port used by the PC. If the handwheel via USB is connected, the wheel also appears as COMx port. The corresponding COM port in the drop-down menu appears, the handwheel must start already before the program mvscm be connected.

At the close the machine pulley rotates about the USB port requires Windows to the appropriate USB to load drivers. This is ftdi/CDM on the CD under the directory 2.04.16 WHQL certified. This driver simulates handwheel as COMx port on the PC the USB. The advantage of this is that receiver software was written for the RS232 interface can be used.



MVS Terminal

USB/COM Port setting



Order code

9000.00.777 MR190 with USB interface



Do you have any Questions ?

Phone: +41 (0)44 843 40 20 or Mail: sales@micronor.ch