

Manual pulser generator

MR190 SERIES



For Machining, Control Panels, CNC Machines

- ➔ Different Output Driver
- ➔ Compact size
- ➔ Including knob
- ➔ 100 pulses per Turn

Product description

The series MR190 is perfect to use in front of a CNC Machine or inside in a Handheld Unit. The compact and small size helps to design in all application around machining. The intergraded encoder creates different signals and send 100 pulses per round to your controller.

Application

This manual pulser is placed in front of all CNC-Machines, NC- Machines and Handheld units.

Technical specifications

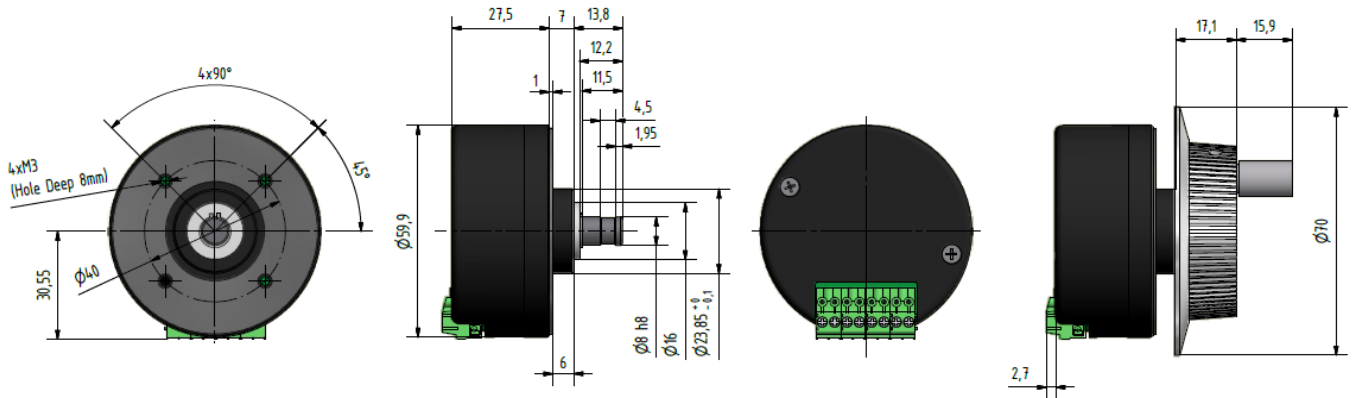
| | |
|------------------------------|-----------------------------------|
| Current consumption | max. 70mA |
| Scanning frequency | max. >5 kHz |
| Output current RS 422 | Zw. 0 and +4.8V |
| Output A and B switchable | Between 0 and +5V or 0 and VCC |
| Output voltage | Vcc -0.7V |
| Resolution | 1% = 3.6° |
| Torque | <0.2Ncm |
| Torque (click point) | 8Ncm |
| Rotation life (Notched disc) | 1.10 ⁶ Umdr. (200 rpm) |
| Operating temperature | -10°C +60°C |
| Storage temperature | -20°C +70°C |
| Atmospheric humidity | 85% RH |
| Vibration | 10...55 Hz 1.5mm 2hr |
| Shock | 50G (11ms) X, Y, Z |
| Weight | 200g |

Manual pulser generator

MR190 SERIES



Dimension in mm



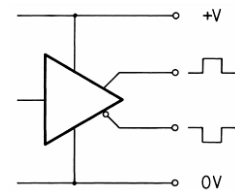
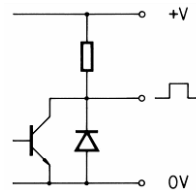
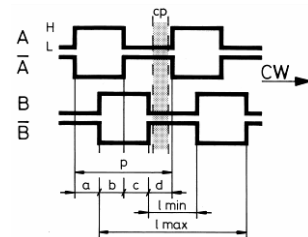
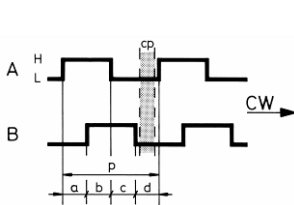
Output driver

cp = Click point
p = Periode

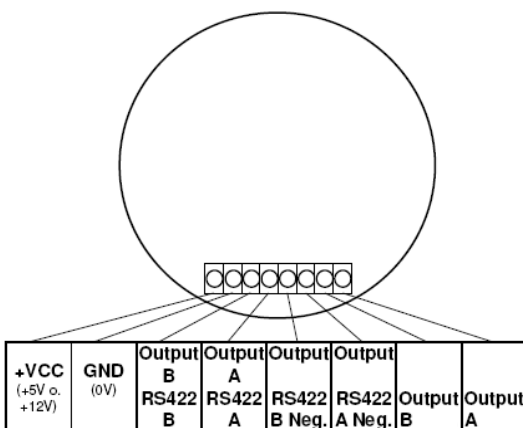
Line Driver (ESM74)

Pull up (2 K Ω intern)

Line driver (RS 422)



Electrical connection



Manual pulser generator

MR190 SERIES



Order Codes

| | | |
|--------------------|------------------------|-------------------------|
| 9350.01.121 | MR190.1 | (replaced ESM80) |
| | Signal output | Push-Pull + Line Driver |
| | Entry current | 4.9 - 5.3 VDC |
| | Entry resistant | 326 Ohm |
| | Max. output current | 4V |
| 9350.01.123 | MR190.3 (Fanuc) | (replaced ESM70) |
| | Signal output | Push-Pull + Line Driver |
| | Entry current | 4.9 - 5.3 VDC |
| | Entry resistant | 2 kOhm |
| | Max. output current | 4V |
| 9350.01.127 | MR190.7 | (replaced ESM74) |
| | Signal output | Push-Pull + Line Driver |
| | Entry current | 4.9 - 5.3 VDC |
| | Entry resistant | 2 kOhm |
| | Max. output current | 4V |
| 9350.02.128 | MR190.8 | (replaced ESM72) |
| | Signal output | Push-Pull + Line Driver |
| | Entry current | 11.9->12.5V |
| | Entry resistant | 2 kOhm |
| | Max. output current | 4V |



Questions ?

Phone: +41 (0)44 843 40 20 or Mail: sales@micronor.ch