

**MARM SERIE**

**For universal use**

- ➔ Suitable for encoder 58 with clamping flange / MR324 / ENI100
- ➔ Easy to mount in all positions
- ➔ Temperature range -10°C ... + 120°C
- ➔ Almost infinitely adjustable contact pressure

**Product description**

High-quality measuring arm for universal use and can be mounted in all positions. The MICRONOR measuring arm is available as a complete length measuring system, as well as individual accessories. All commercially available encoders and measuring wheels can be mounted on the measuring arm. The contact force can be easily adjusted and is adjustable in 10N increments with a ratchet wheel. MICRONOR offers measuring wheels with different wheel coverings for all applications.

**Application**

Among others, the areas of application can be found in the paper, metal, wood or plastics industries.



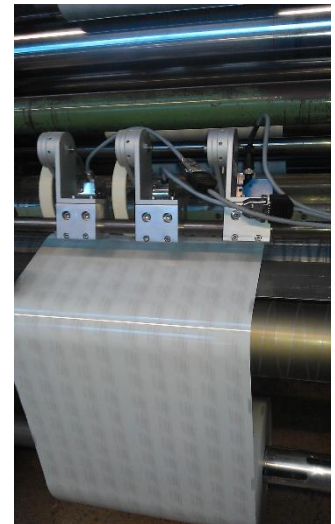
Mounting hanging



Mounting side



Mounting top



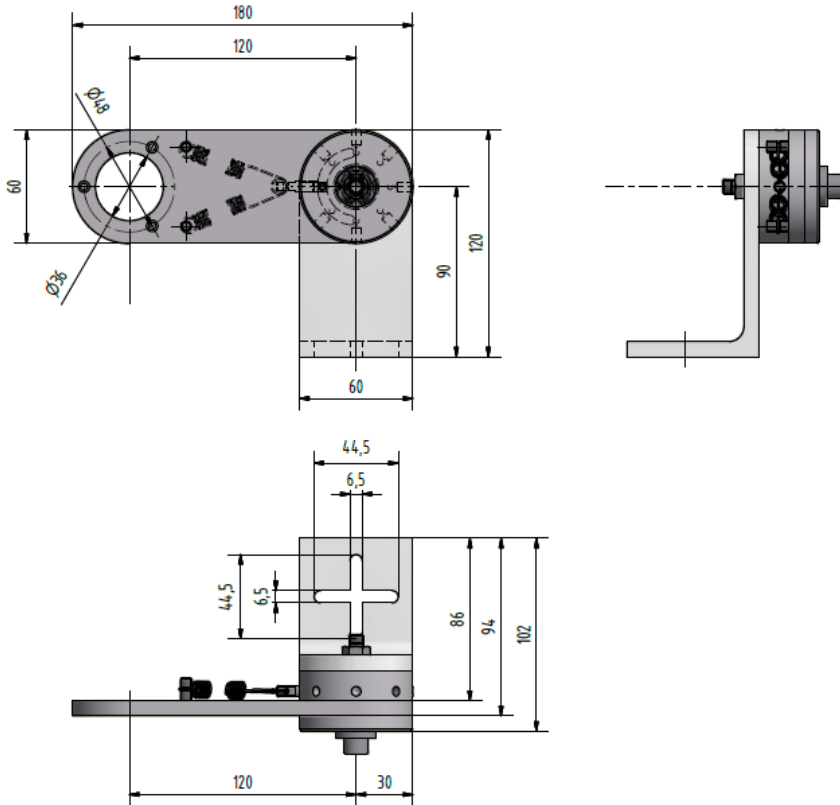
Multiple mounting

**MARM SERIE**

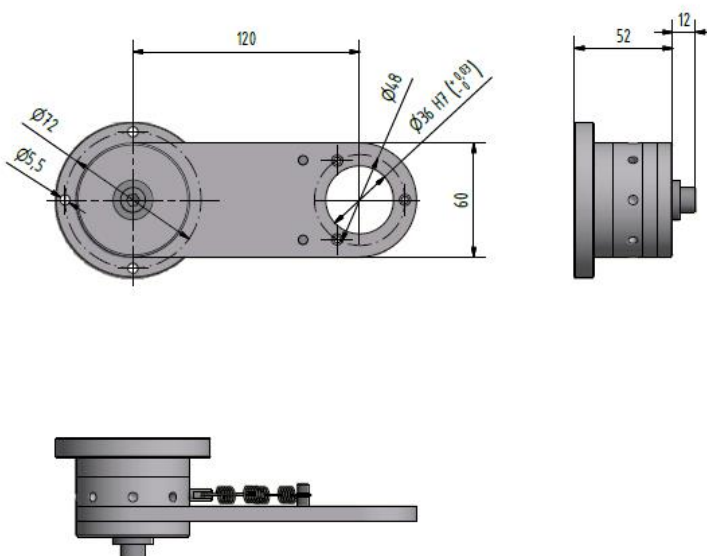


Reference drawing in mm

Standard – 9600.03.002



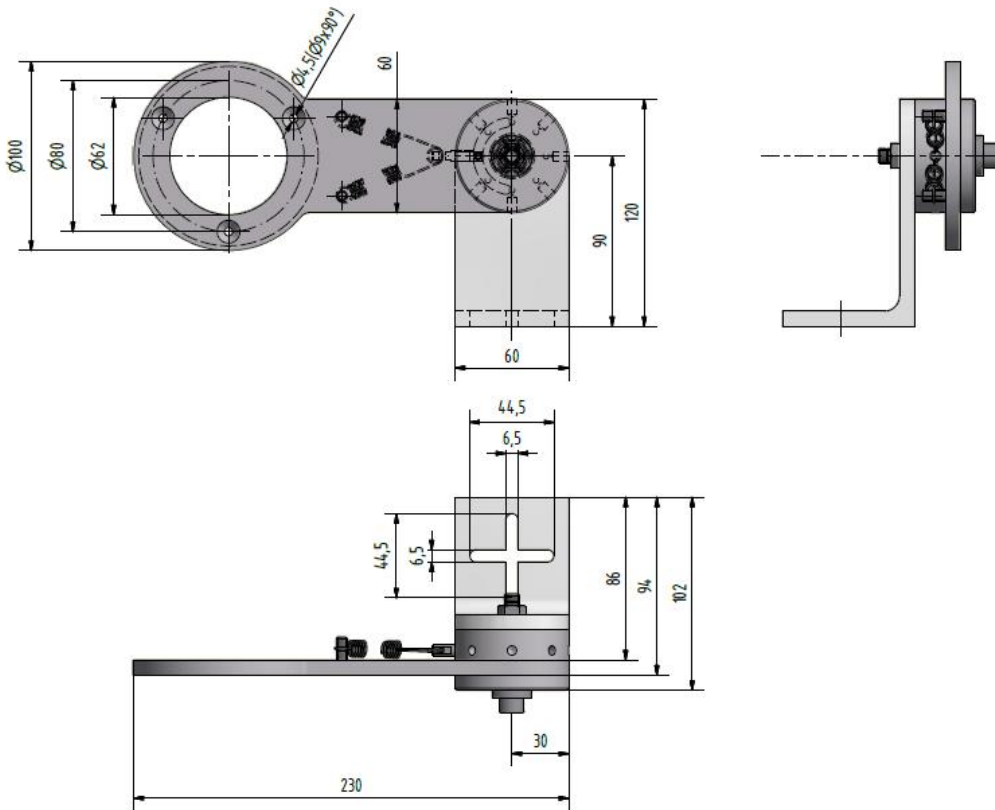
Flange mounting – 8400.00.034



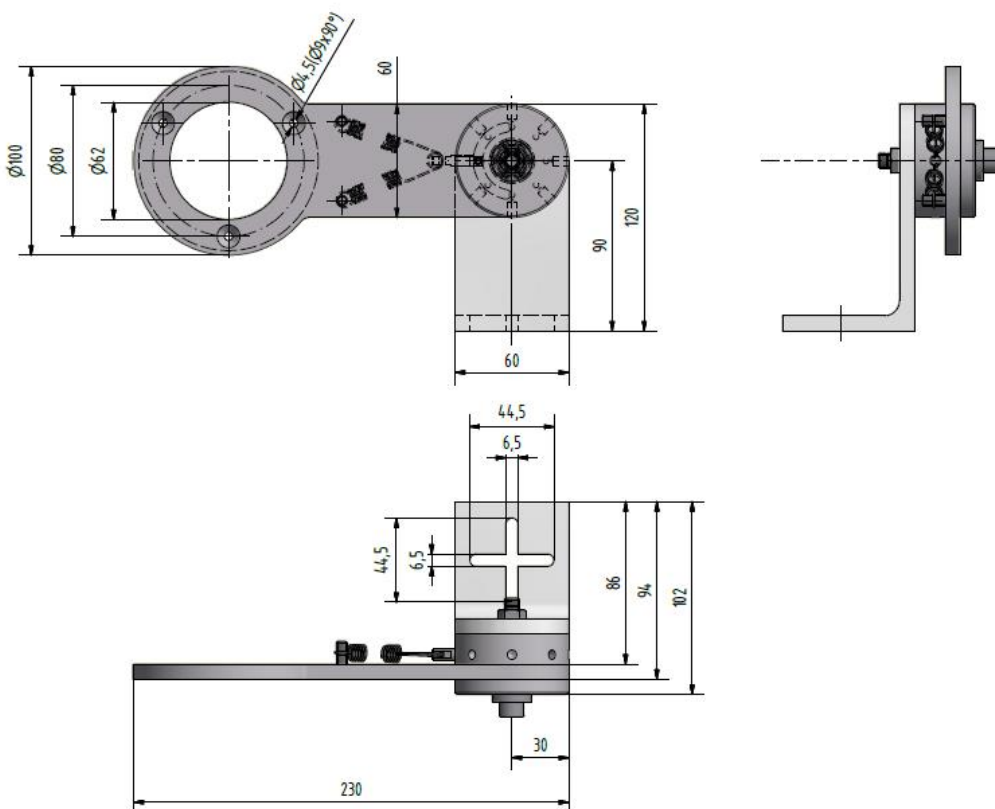
**MARM SERIE**



For MR326 – 9350.02.830



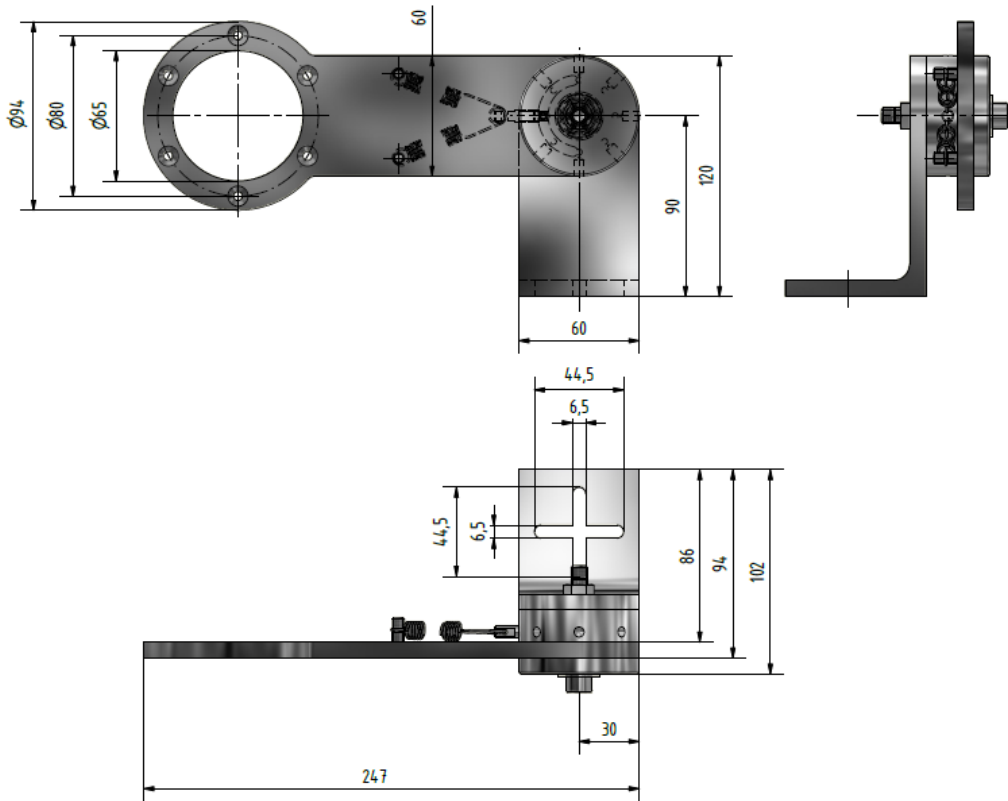
For MR326 – 9350.02.830



**MARM** SERIE



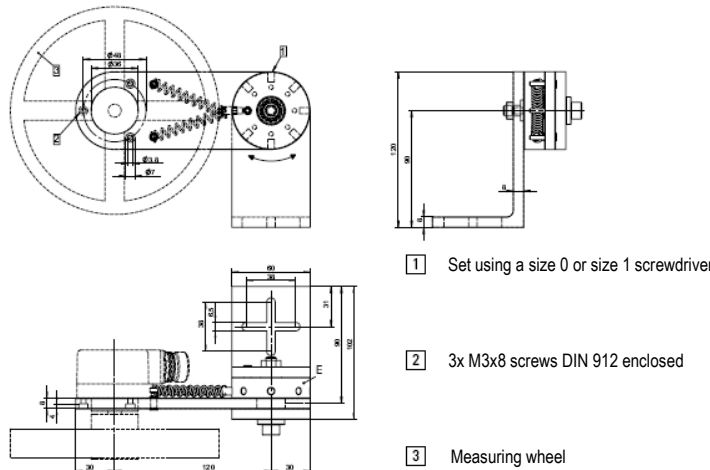
For MR344 – 9350.04.227



**MARM SERIE**

**Mounting**

1. Mount the holder: Fasten the measuring arm to the machine using the cross-slotted groove so that the movable arm is parallel to the direction of travel. Mount the encoder on the measuring arm and attach the electrical connection in such a way that the arm is not restricted in its movement and no tensile force is applied to it.
2. Adjust contact pressure: Loosen central screw with Allen key and bring arm into approximately correct position. Use a screwdriver, for example, to engage in the hole 1 provided in the setting wheel E and set the arm so that the measuring wheel touches the material to be measured. Adjust the contact pressure by turning the adjusting wheel E by about one notch (~10...30N). Tighten the central screw again.


**Note**

Mount the measuring arm so that the measuring wheel runs parallel to the material to be measured. Set the contact pressure so that the material to be measured is not damaged.

**Maintenance**

Check the ease of movement of the arm regularly. If it is difficult to move, send it in for cleaning/maintenance.

**Technical Data**

Contact pressure per detent: approx. 20N (first detent between 0 and approx. 20N)  
 Temperature: -10°C ... +120°C

**Order code**

9600.03.002	MARM – Standard
8400.00.034	MARM – Flanschmontage
8400.00.036	MARM – Anschlussflansch
9350.02.830	MARM – MR326
9350.04.227	MARM – MR344



**Do you have any questions?**

Phone: +41 (0)44 843 40 20 or Mail: [sales@micronor.ch](mailto:sales@micronor.ch)